



Note: Photo taken with Canon EOS 6D full frame camera with Canon EF 50mm/1.8 STM lens used to prepare this rendering in order to show building inserted into current context. This rendering is intended to best illustrate design intent in current context.

August 1, 2019      ©2019 Torti Gallas Urban | 650 F St NW, Suite 690 | Washington, DC 20004 | 202.232.3132



MIDCITY FINANCIAL  
TORTI GALLAS URBAN, INC.

VIEW LOOKING WEST ALONG M STREET  
1200 5TH STREET NW



Note: Photo taken with Canon EOS 6D full frame camera with Canon EF 50mm/1.8 STM lens used to prepare this rendering in order to show building inserted into current context. This rendering is intended to best illustrate design intent in current context.

August 1, 2019      ©2019 Torti Gallas Urban | 650 F St NW, Suite 690 | Washington, DC 20004 | 202.232.3132



MIDCITY FINANCIAL  
TORTI GALLAS URBAN, INC.

VIEW FROM RIDGE STREET  
1200 5TH STREET NW



WEST ELEVATION



NORTH ELEVATION



SOUTH ELEVATION



EAST ELEVATION

August 1, 2019

©2019 Torti Gallas Urban | 650 F St NW, Suite 690 | Washington, DC 20004 | 202.232.3132



MIDCITY FINANCIAL  
TORTI GALLAS URBAN, INC.

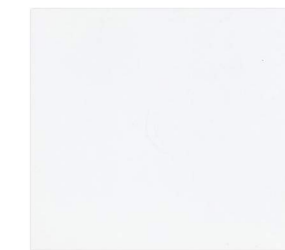


ELEVATIONS  
1200 5TH STREET NW

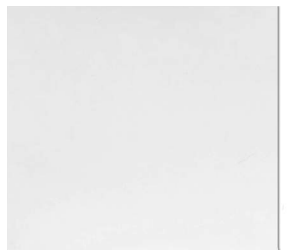


### MATERIALS LEGEND

- 1 Masonry - Color #1
- 2 Masonry - Color #2
- 3 Cementitious Panel #1
- 4 Cementitious Panel #2
- 5 Cast Stone
- 6 Windows & Doors
- 7 Railing
- 8 Metal Panel



CEMENTITIOUS  
PANEL #1



CEMENTITIOUS  
PANEL #2



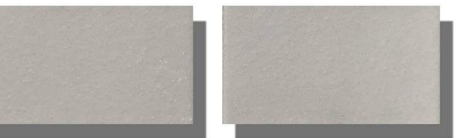
CAST STONE



WINDOWS, DOORS,  
& METAL PANEL



MASONRY - COLOR #1



MASONRY - COLOR #2



SOUTH ELEVATION

August 1, 2019

©2019 Torti Gallas Urban | 650 F St NW, Suite 690 | Washington, DC 20004 | 202.232.3132



MIDCITY FINANCIAL  
TORTI GALLAS URBAN, INC.



ENLARGED ELEVATIONS  
1200 5TH STREET NW